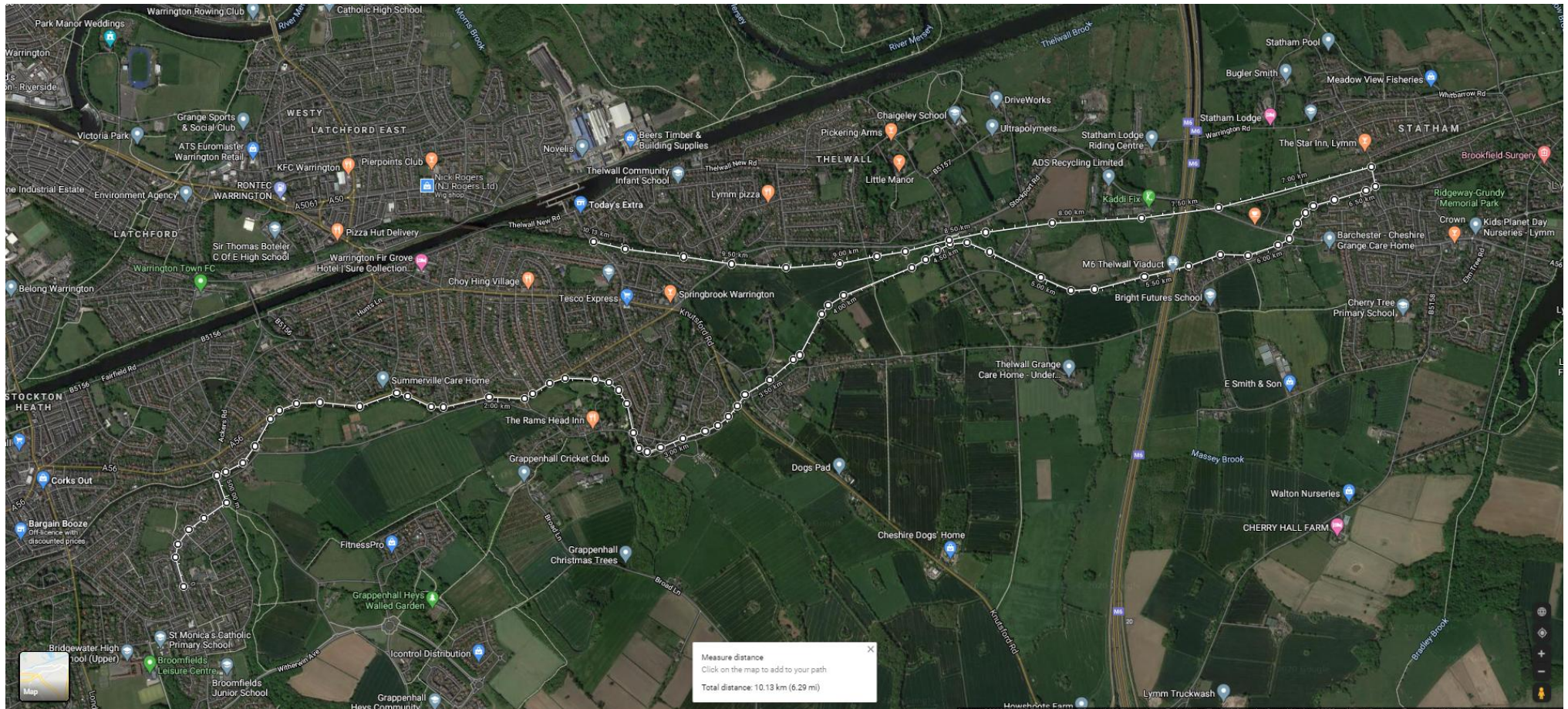


Canal & Transpennine 10k - Start on Bridge Lane, finish on the Transpennine Trail at Bradshaw Lane following one of our summer runs.



Directions

Start on Bridge Lane at the junction with Wood Lane (running on the left hand side) go down hill past the shops.

At the end of the road turn left, cross the road, run under the bridge, then turn right and climb the footpath up onto the canal at Lumb Brook.

Stay on the Canal and pass under the M6, then come off the canal at Barsbank Lane, drop down and turn right running towards the Star Inn, but turn left onto the Transpennine Trail before you reach the pub.

Follow the Transpennine Trail to its end point at Bradshaw Lane, stopping your watch at the barrier before the road.